

# IANR to 2017 to 2025



**“All Hands Meeting”**

**February 10, 2012**

**Nebraska East Union**

# Roadmap for Conversation

- What has changed since September 16<sup>th</sup>?
- Updates on Nebraska Innovation Campus, Foundation Initiatives, New Talent
- Progress report on **IANR to 2025** implementation steps
- Plans for addressing near-term UNL and IANR goals to 2017
- Community-building opportunities

# What has changed since Sept 16?

## Financial

- Economy slowly improving but still tenuous on national and global levels
- State and local economy super-defying global conditions
- Federal finances largely on hold until post-election
- Booming agricultural sector – especially Nebraska and Iowa
- Continued escalating Foundation resources

# What has changed since Sept 16?

## State Funding

- UNL is 21% state funded, one of highest in APLU (IANR is 48%)
- Now in year 2 of biennium – will soon begin budget planning for 2013-15
- Have been able to rebuild cash reserve
- All eyes on February forecast
- NU legislative package in short session



*Lincoln*



*Omaha*



*Kearney*



*Medical Center*

## “Building a Healthier Nebraska”

- Comprehensive Cancer Center: \$50 million to be leveraged with \$300 million + of private funds and patient revenues; new construction; research tower, cancer hospital, outpatient clinic, ambulatory clinic, parking
- Lincoln Division, UNMC College of Nursing: \$17 million; new construction on East Campus (existing capital request), replaces downtown leased facility





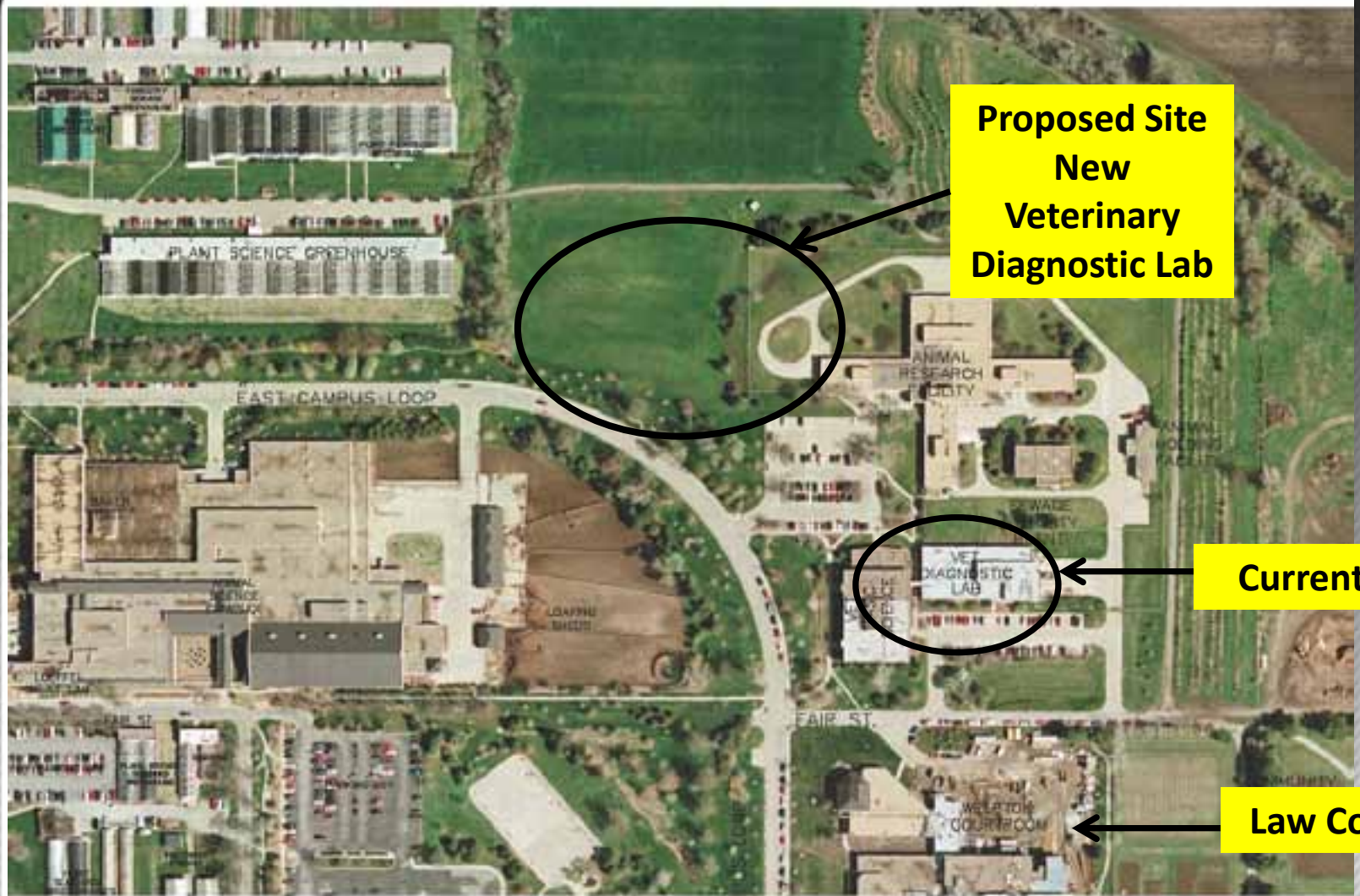
## “Building a Healthier Nebraska”

- UNMC Nursing and Allied Health at UNK: \$19 million; addition to Bruner Hall
- Veterinary Diagnostic Center at UNL: \$5 million for planning, design and construction documents for new construction



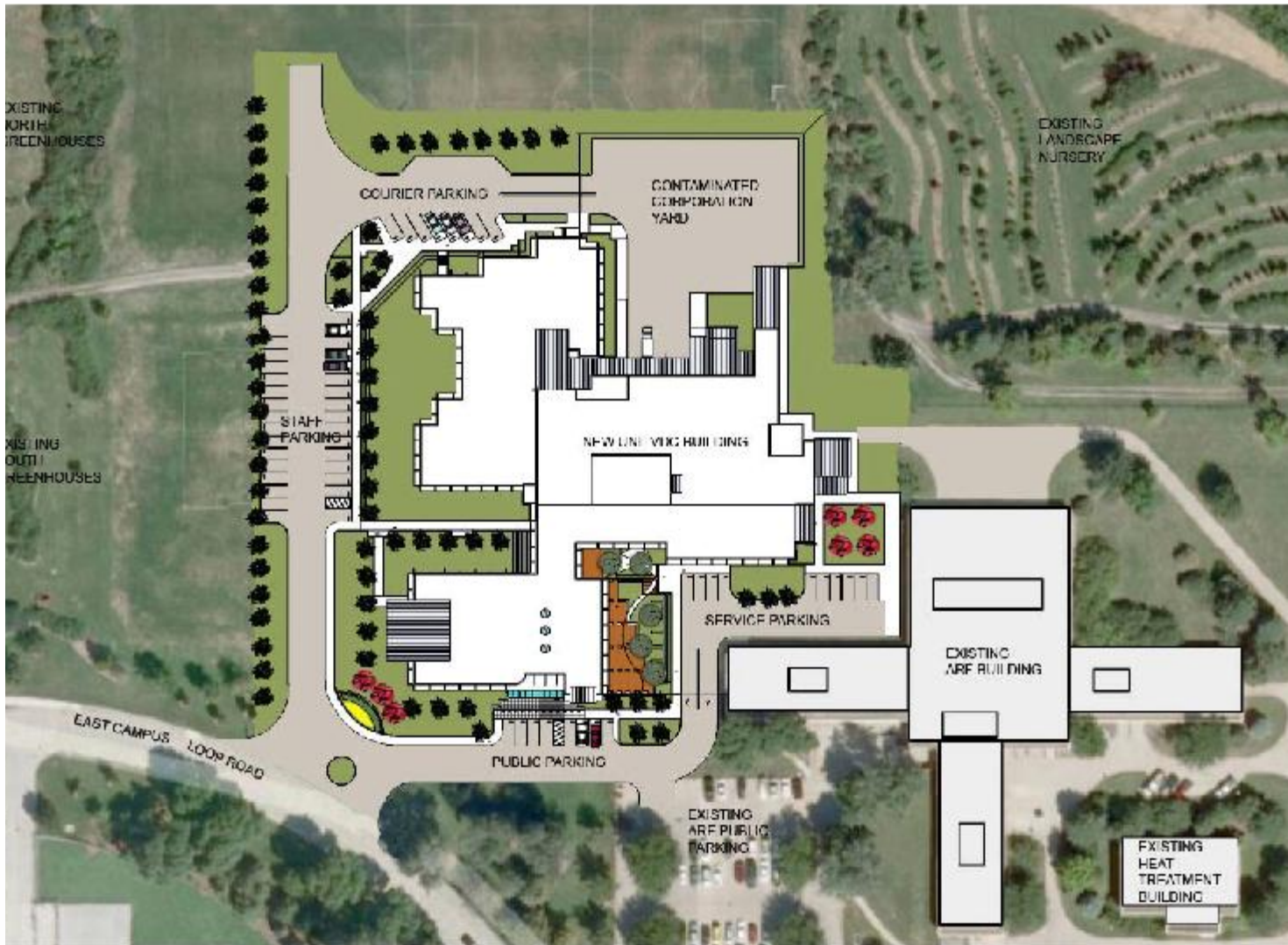
- Architect proposed alternatives ranging from \$42.7 million to \$68.5 million
- Proposing a mid-range alternative @ \$50 million
- Architect validated a new building most cost-efficient
- LB 1066 would appropriate planning funds







# UNIVERSITY OF NEBRASKA-LINCOLN

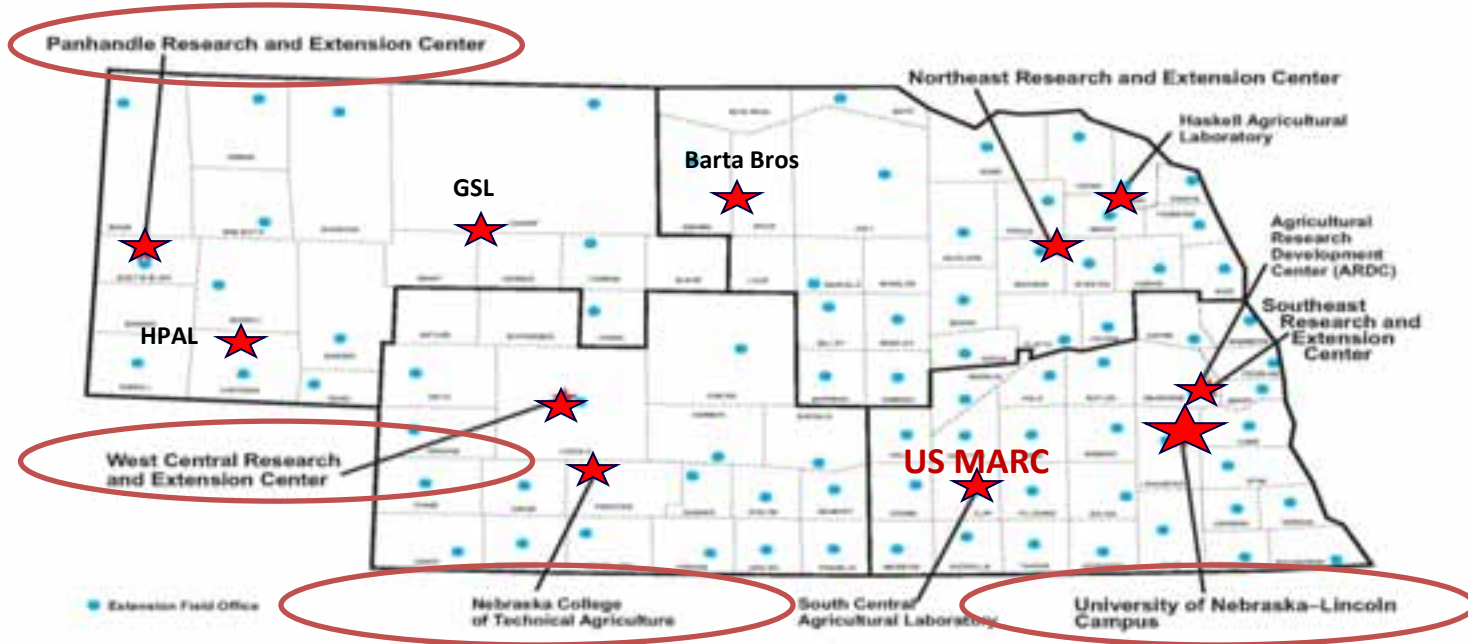


## Veterinary Diagnostic Center Project Timing

- 2012 Legislative Session: Obtain planning and design development funding.
- Design drawings complete Dec. 2013
- 2013 Legislative Session: Submit capital budget request as part of biennial budget submission
- Begin construction Jan. 2014
- August 2016: Move into new facility

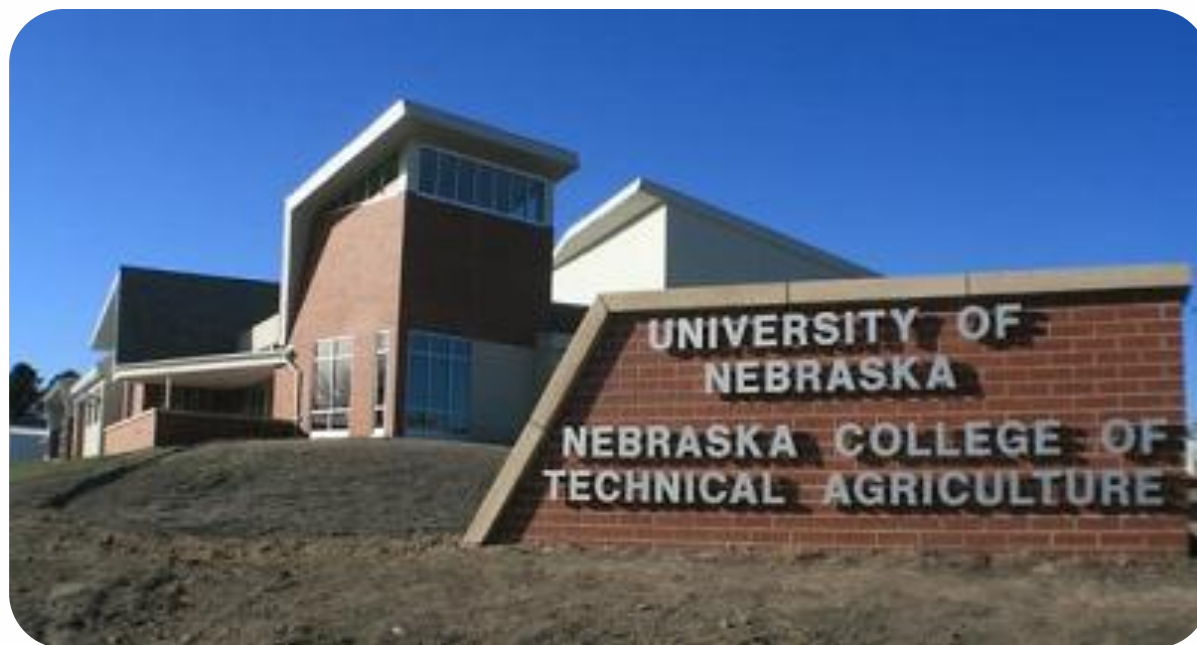


# Teaching, Research, and Extension





# A new skyline in Curtis, NE . . .





# A different shadow?

<b>Formula Funds</b>	<b>FY 12 IANR Award (million)</b>
<b>Smith-Lever</b>	\$ 5.17 (14.2%)
<b>Hatch Act</b>	\$ 4.24 ( 6.2%)
<b>Mc-Stennis</b>	\$ 0.31 ( 0.5%)

% amounts are the formula funds as a portion of our total Extension and Research Budget



## A different shadow . . .

<b>Competitive NIFA Opportunity</b>	<b>FY 12 Federal Funding (million)</b>
<b>AFRI</b>	<b>\$ 264.5</b>





## BILL & MELINDA GATES *foundation*

Western  
**FARM  
PRESS**  
TIMELY RELIABLE INFORMATION  
FOR WESTERN AGRICULTURE

print | close

### Bill Gates says lack of ag research money 'shocking'

Thu, 2012-02-02 18:26

NAWG

Bill Gates, founder of Microsoft and one of the richest men in the world, highlighted the relative lack of money devoted to agricultural innovation and research in his annual letter outlining the Bill and Melinda Gates Foundation's 2012 priorities.

The Foundation was founded by the Gates' in 1994 and is now the world's largest philanthropic organization. Guided by the philosophy that every life has equal value, the Foundation spends the majority of its funds on global health and development projects, both of which are intimately tied to agriculture.

Gates' comments in his 2012 letter expand on his longstanding interest in agricultural development, to which he says his Foundation has devoted \$2 billion.

Research commissioned by the Foundation shows just \$3 billion a year is spent researching the seven most important crops, including wheat, maize, rice, cassava, sorghum, legumes and sweet potatoes. Of that, \$1.5 billion comes from countries' public funds, \$1.2 billion from private companies and \$300 million from international research organization CGIAR. By comparison, the Foundation made \$2.4 billion in grant payments across a range of program areas in 2010.

<http://westernfarmpress.com/print/government/bill-gates-says-lack...> 2/3/2012

# What has Changed?

## *External funding*

Total to date in fiscal year 2012:

**\$51.5 million**

**↑ 25%**

(2011 - \$70.7 million)

## UNL leads \$25 million project targeting E. coli food threat

The University of Nebraska-Lincoln will lead a \$25 million project to reduce throughout the beef production chain the occurrence of E. coli strains that pose a major threat to public health.



The U.S. Department of Agriculture's National Institute of Food and Agriculture announced the grant at UNL Monday (Jan. 23).

The project targets Shiga-toxin producing E. coli, or STEC, which cause more than 265,000 illnesses in the United States annually. Eating contaminated food or having direct contact with fecal matter from infected cattle and other ruminants cause most of these illnesses.

UNL will lead a team of 48 scientists from 11 land-grant universities and other partner institutions to conduct integrated research, education and extension projects on eight types of STEC. Studies will include the best-known STEC, E. coli O157:H7, along with seven strains that are not as well understood, partly because outbreaks due to these strains are rarely identified.

### ThisWeek@IANR

MON. JAN. 23, 2012

UNL professor, alum honored by Cattle Business Weekly as Top 10 Industry leaders

UNL leads \$25 million project targeting E. coli food threat

Heuermann lecturer Brand: 'Wild and woolly' times are ahead for genetic engineering

4-H has new animal care resources site

Rural Advantage/Healthy Farms Conference Feb. 10-11 in Nebraska City

Shafer retirement reception Jan. 27

Submit your news to ThisWeek@IANR

Newsletters including this



## Major Grant Success

- \$9,712,548 – Keen, Moxley, Thippareddi -- STEC in the Beef Chain (USDA)
- \$7,045,455 – Lodl, Durden -- Child Care & Youth Training and Tech. Assist. (USDA)
- \$2,034,324 – Cassman -- Global Yield Gap and Water Atlas (Gates)
- \$2,019,163 – Becker -- Redox Biology Center (NIH)
- \$1,974,630 – Hancock -- Nebraska Broadband Planning (Dept of Commerce - NTIA)
- \$1,676,640 – Cotton -- eXtension Building Cooperative Extension's 21st Century
- \$1,399,200 – Benson -- GI Microbiota & Predispost to EHEC (USDA)
- \$1,300,000 – Cotton -- National eXtension Project (Land Grant Coop Extension Directors)
- \$1,171,245 – Jackson -- U. S. Meat Animal Research Center (USDA)
- \$1,168,912 – Lubben -- North Central Risk Management Education Center (USDA)
- \$1,000,000 – Walter -- Dynamics of Host-Associated Microbial Communities (NIH)
- \$860,000 – Stowell -- National Facilitation of Ext. Program in Climate Change Mitigation and Adaptation for Animal Agriculture (USDA)
- \$829,998 – Hayes, Svoboda-- National Integrated Drought Information System (NOAA)
- \$653,147 – Cassman -- CGIAR Fund Office ISPC Chair (World Bank Group IBRD)
- \$599,998 – Mackenzie -- Epigenome/Bioenergetic in Phenotypy (NSF)
- \$594,190 – Mower -- Genome Evolutionary Processes (NSF)
- \$591,451 – Cady -- Nebraska Technology Center (Federal Hwy Act)
- \$573,852 – Irmak -- Measurement of Growing Season (Central Platte NRD)
- \$557,708 – Walia -- Early Seed Development Under Stress Environment (NSF)

## Federal Grant Support Received by the Nebraska Cooperative Fish and Wildlife Research

- \$601,885 – Allen -- Missouri River Mitigation: Implementation of Amphibian Monitoring and Adaptive Management for Wetland Restoration Evaluation (USACE)
- \$336,929 – Tyre -- Quantifying Uncertainty in Missouri River Adaptive Management Processes (USACE)
- \$212,122 – Powell -- Assessing Local & Regional Variability in Productivity & Fidelity of Grassland Birds on National Park Service Units in the Great Plains (NPS)
- \$193,000 – Fontaine -- Avian Conservation in the Prairie Pothole Region, Northern Great Plains: Understanding the Links between Climate, Ecosystem Processes, Wetland Management and Bird Communities (USGS)
- \$182,286 – Knezevic -- Total Vegetation Control on Sandbars Along the MO River Utilizing Lime and Herbicides (USACE)
- \$101,591 – Stansbury -- Multi-Criteria Assessment of Habitat Restoration for the Missouri River (USACE)
- \$65,000 – Hanson -- Subsurface Investigation for Eolin & Interdune Deposits, Crescent Lake Nat'l Wildlife Refuge (USGS)
- \$54,854 – Hygnstrom -- Individual-Based Models to Predict the Spread of Chronic Wasting Disease in Nebraska (USGS)
- \$44,000 – Allen -- Evaluation of Nebraska Landowner Incentives Program Practices for Species at Risk (USGS)
- \$35,000 – Pope -- Impact on White Perch on Walleye at Branched Oak & Pawnee Reservoirs (USGS)
- \$30,000 – Allen -- Scenarios of Climate Change & Land Use Change and Biological Invasions in the High Plains (USGS)
- \$25,000 – Allen -- Spatial Risk Assessment in NE: Risk to Native Species from Non-Native Invasive Species (USGS)
- \$23,000 – Allen -- Affects of Animal Invasions on Alpha, Beta & Gamma Diversity in Mediterranean-Climate Ecosystems (USGS)
- \$20,000 – Allen -- Adaptive Management of Prairie Remnants for Legacy Goals (SGS)
- \$7,466 – Allen, Decker -- Implementation of Nebraska Aquatic Nuisance Species Management Plan (USFWS)

# Momentum Building . . .



**Innovation  
Campus**







**Dan Duncan**

***Director  
Nebraska Innovation  
Campus***

# Innovation Campus Themes

**Food**



**Fuel**



**Water**





## Nebraska Innovation Campus Planned





## Construction to Start Spring 2012





# Initial Project: 4-H Building Opening 2013





**NEBRASKA INNOVATION CAMPUS**  
UNIVERSITY OF NEBRASKA-LINCOLN • [INNOVATE.UNL.EDU](http://INNOVATE.UNL.EDU)













Nebraska Innovation Campus

- **High Throughput Plant Biomaterials Testing Facility**
- **Collaborations in Crop Science**
- **Public/Private Partnerships in Digital Humanities**
- **Bio Fiber Production**
- **Life Sciences Building**
- **Core Facility for Multidimensional Separations**
- **Environmental Businesses Network**
- **Nebraska Center for Industrial Biotechnology, Bioenergy & Bioproducts**
- **NU Center for Railroad Infrastructure Quality**

ConAgra  
Foods®



Bayer CropScience

nebraskaGlobal

Develop here

BUNGE

MONSANTO



MERCK

Animal Health

Cabela's

Cargill

GALLUP®



JOHN DEERE



Water for Food

ROBERT B. DAUGHERTY INSTITUTE  
University of Nebraska

NBA Nebraska Bankers Association

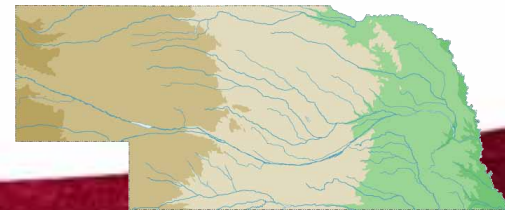
N  
IANR

BIG



## Nebraska Economy is in an Unprecedented Time

- Ag receipts in 2011 of **\$23 billion** with net farm income of **\$5.4 billion**
- **2012-2014** expected to be slightly lower but above prior 2011 record numbers
- Land prices escalating (22% increase in 2011)
- Generational transfer of land in NE projected at \$8 billion over the next five years



# Global Challenges Ahead: Ag is Sexy Again!



# Private Giving to the University is at an All-Time High . . .

NU to Date	\$1,126,149,804
IANR to Date	\$ <b>90,475,612</b>
IANR Goal	\$ <b>250 million +</b>



***Must leverage new opportunities in  
entrepreneurial ways!***



To be the leading public university  
in the world in “feeding the future”  
. . . through advancing food,  
energy, natural resource and rural  
landscape security.



**Time has never been better to  
re-think funding streams**

**Enabling IANR to 2025 Success**

***IANR must have a total of 25 new  
Presidential Chairs by 2017 in strategic  
areas of priority and focus – \$3.5 million  
each for endowment plus operational  
spendable funds***

**Need = \$84 million**



The Robert B. Daugherty  
Water for Food Institute



Rural Future Landscape

Center for Food,  
Fuel & Water Policy



Center for Plant Science  
Innovation

Center for Red Meat  
Innovation

Food for  
Health

Gut Function Initiative  
Nebraska Gateway for Nutrigenomics  
Redox Biology Center  
Nebraska Center for Virology

UNIVERSITY OF  
**Nebraska**  
*Number One in Feeding Our Future*





rural futures

UNIVERSITY OF  
Nebraska

# UNIVERSITY OF Nebraska Rural Futures Institute

*The Rural Futures Institute (RFI) will provide internationally recognized intellectual leadership to assist rural Nebraska and the Great Plains in creating a resilient and sustainable future building on an innovation economy. Drawing upon the resources of the University of Nebraska System and those of its partners, RFI will help rural residents find their unique path to their desired futures.*

rural futures



- **May 8-10, 2012**
- **Cornhusker Hotel, Lincoln**
- **Registration opens on 2/15**
- **[www.ruralfutures.nebraska.edu](http://www.ruralfutures.nebraska.edu)**



# Institute of Agriculture and Natural Resources





*IANR* really is . . .

**1,615**

**people passionate about making a  
difference**

- **1,200** IANR employees work on campus
- **400** IANR employees are located in Nebraska communities statewide
- **560** total faculty





**Ron Yoder**

***IANR***  
***Associate***  
***Vice Chancellor***



## **Archie Clutter**

***Dean  
Agricultural Research  
Division and  
Director  
NE Ag Experiment Station***

# Developing Empowered Leadership



Jeff Noel  
Assistant Director  
Agricultural Research Division



# Developing Empowered Leadership

**Dean and Director**

**Associate Director and 4-H Program  
Administrator**

**UNL Extension**



# Developing Empowered Leadership

## Dean and Director, UNL Extension



March 6-9  
Susan Williams



March 13-16  
Deborah Sheely



March 20-24  
Duane Williams



March 25-28  
David Hardin

Additional information: [www.extension.unl.edu](http://www.extension.unl.edu)

# Developing Empowered Leadership



**Child, Youth and Family Studies**

Richard Bischoff

**Nutrition and Health Sciences**

Tim Carr



**Agronomy and Horticulture**

Roch Gaussoin

**Biological Systems Engineering**

Milford Hanna





## Developing Empowered Leadership



**Robert B. Daugherty**  
**Water for Food Institute:**  
Roberto Lenton

## Engler Agribusiness Entrepreneurship Program:



Tom Field



Mark Gustafson

# Developing Empowered Leadership

**Associate Vice Chancellor**

**Life Sciences**



**Brian Larkins**

**(July 1, 2012)**

# New Faculty (19)

<b>Gerard Adams</b>	<b>Plant Pathology</b>
<b>William Bird</b>	<b>Ag Leadership Educ &amp; Comm</b>
<b>Sohan Birla</b>	<b>Biological Systems Engineering</b>
<b>Amy Burgin</b>	<b>School of Natural Resources</b>
<b>Karen Cannon</b>	<b>Ag Leadership Educ &amp; Comm</b>
<b>Kayla Colgrove</b>	<b>Southeast R&amp;E Center</b>
<b>Lena Cottle</b>	<b>Animal Science</b>
<b>Heather Depra</b>	<b>Northeast R&amp;E Center</b>
<b>John Farrell</b>	<b>Ag Leadership Educ &amp; Comm</b>
<b>Mary Garbacz</b>	<b>Ag Leadership Educ &amp; Comm</b>
<b>Douglas Golick</b>	<b>Entomology</b>
<b>Annette Haas</b>	<b>Panhandle R&amp;E Center</b>
<b>Chitvan Khajuria</b>	<b>Entomology</b>
<b>Oleh Khalimonchuk</b>	<b>Biochemistry</b>
<b>Bo Liu</b>	<b>West Central R&amp;E Center</b>
<b>Terrance Loecke</b>	<b>School of Natural Resources</b>
<b>Regis Moreau</b>	<b>Nutrition &amp; Health Sciences</b>
<b>L Kayte Tranel</b>	<b>Southeast R&amp;E Center</b>
<b>Huihui Xu</b>	<b>Biological Systems Engineering</b>



# Developing Empowered Leadership

## Getting Entrepreneurial



**Jessica Shoemaker**

# Positions Being Recruited

- School of Natural Resources Director
- Biological Systems Engineering Head
- Statistics Chair
- Director of Global Engagement
- Nebraska Water Center Director
- DWFI Research Director
- DWFI Policy Director

## **TT Faculty Positions Being Recruited Current Academic Year (19 FTE)**

- **AGEC Cluster Hire -- Livestock Economist (Asst)**
- **AGEC Cluster Hire -- Ag Firm & Commodity Risk Management (Asst/Assoc)**
- **AGEC Cluster Hire -- Grain, Oilseed & Biofuels Economist (Asst)**
- **AGRON-HORT -- Weed Management Specialist (Asst)**
- **AGRON-HORT -- Soil Management Scientist (Asst)**
- **ALEC -- Strategic Communication (Assoc)**
- **ANSC -- Ruminant Nutritionist (Asst/Assoc)**
- **BSE -- Livestock Bioenvironmental Engineer (Asst)**
- **CYAF -- Early Childhood Education Specialist(s)\* (Asst)**
- **FST -- Gastrointestinal Biologist (Asst)**
- **NHS - Exercise Scientist (Asst/Assoc)**
- **NHS -- Molecular Geneticist (Asst)**
- **SNR -- Remote Sensing Scientist (Asst/Assoc)**
- **SVMBS-ANSC – Director, GPVEC (Assoc/Full)**
- **WFI Cluster Hire -- Systems Agronomist (Full)**
- **WFI Cluster Hire -- Crop Simulation Modeler (Assoc) offers\* extended**
- **WFI Cluster Hire -- Irrigation Engineer (Asst) offer extended**
- **WFI Cluster Hire – Hydrogeophysicist (Full) interviews scheduled**
- **WFI Cluster Hire -- Water Modeler-GS Hydrologist (Asst/ Assoc/Full)**



# At Work for Nebraska . . .





# Review of *IANR to 2025* Progress



*IANR to 2025:*  
Time for Action

## ***IANR to 2025***

Eleven IANR to 2025 Teams



Total of **92** Individual Recommendations  
(**51** were unduplicated)



***Moving Forward*** (30)  
***Removing Roadblocks*** (10)  
***Elevating to University*** (11)



# *IANR to 2025*: Time for Action



<http://ianr.unl.edu>

First Deans and Unit Heads (**DUH**) meeting  
August 31, 2011



# Highlights – Strong Human Capital

## Revise Annual Review Of Faculty Process

### Done

- Changing timeline – eARFA now due **January 15** and reporting for calendar year
- Reducing amount of time for feedback
- Changing content of eARFA submission to streamline – reducing number of reporting areas

# Highlights – Strong Human Capital

## Revise Annual Review Of Faculty Process

### In Progress

- Developing revised frequency and evaluation for post-tenure faculty
- Developing clearer faculty performance criteria
  - Include multidisciplinary incentives
  - Include IP/entrepreneurship
  - Standardize definition of excellence across IANR – define performance criteria



# Highlights – Strong Human Capital

## Done

- Recognition of the need for flexibility of individual R/T/E appointment within units

## In Progress

- Revise/re-vamp staff evaluation process

## To Do

- Develop/institute more universal faculty and staff mentoring program across IANR, especially assistant/associate professors

# Highlights – Acquiring Human Talent

## Done

- Encourage/pave way for cluster hires (e.g., water)

## In Progress

- More participative leadership by unit heads in position/resources allocation – DUH meetings
- Faculty hiring packages developed pre-interviews
- Provide more leadership opportunities to faculty for administrative development

# Highlights – Acquiring Human Talent

## To Do

- Add risk taking/entrepreneurship to position descriptions
- Lead dean assigned for each search
- Institutionalize formal IANR new faculty and staff orientation – target is Fall 2012



# Highlights – Acquiring Human Talent

## Done

- Establish bridge funding mechanism with VCRED

## In Progress

- Develop a salary pool for equity salary adjustments for staff and faculty
- Develop coordinated and systematic IANR Awards Committee that strengthens faculty and staff recognition and honors – including National Academies and other groups

# Highlights – Acquiring Human Talent

## To Do

- Fully implement NU-Values system to allow in-job promotion/promotion in rank
- Make staff HR system more closely resemble those outside the university

## Highlights – Better Business Operations

### Done

- Use NU Grant for accepting and processing internal grants

### In Progress

- Move to electronic travel processing with minimum approvals required
- Use blanket travel authorizations/reduce number of travel approvals



## Highlights – Better Business Operations

### In Progress

- Use PeopleAdmin to streamline faculty/staff hiring/PD changes/reclassifications
- Streamline PAF approval process to only include budgetary authority lines

### To Do

- Develop an OSP user forum

# Highlights – Better Business Operations

## In Progress

- Clarifying financial interactions with businesses – NUF or OSP
- Automating time entry in SAP via Firefly
- Improving grant submission process
- Review all policies for potential elimination or simplifications – in particular with facilities

## Done

- Improving SAP data interfaces and approval rating flexibility

# Highlights – Communications, Branding, & External Relations

## In Progress

Make IANR communications “issues-based” and streamline communications strategy

- IANR logo “tagline”
- Reducing print publications
- Develop a single IANR external publication





## Highlights – Transforming Food & Natural Resource Literacy

*Develop a UNL system-wide food, energy and water curriculum*

### Done

- Winter Interim Teaching and Learning Workshop
  - Development of student learning outcomes for food, energy and water
  - Panel discussion on water
- RFP for introductory-level, ACE-certified courses
  - Funded 5 course development proposals
  - Courses available Spring 2013

## Highlights – Transforming Food & Natural Resource Literacy

*Develop a UNL system-wide food, energy and water curriculum*

### In Progress

- Framework for food, energy and water curriculum
- Workshop March 9, 2012 – continue to develop a plan for integration into the UNL curriculum
- ARGI/NRES 103 for ACE certification

### To Do

- Food, Energy and Water minor

# Highlights – Transforming Food & Natural Resource Literacy

## *Initiatives for PreK-12 science instruction*

### Done

- RET programs for K-12 educators – Soybean in the Classroom
  - Funded by USB and NSB
  - National Coalition for Food & Ag Research Lunch-N-Learn seminar
- Over 350 LPS K-2 classrooms using soybean as a model plant system

# Highlights – Transforming Food & Natural Resource Literacy

## *Initiatives for PreK-12 science instruction*

### Done

- CASNR courses available for pre- and in-service teachers (Agronomy and Horticulture, Food Science, Entomology, SNR)
- Collaboration among CASNR, CEHS, and Northeast Research and Extension Center



# Highlights – Transforming Food & Natural Resource Literacy

## *Initiatives for PreK-12 science instruction*

### In Progress

- Agriculture and Natural Resources Summit to engage stakeholders
- Food, energy and water education exhibit at the Lincoln Children's Zoo

# Highlights – Transforming Food & Natural Resource Literacy

## *Initiatives for PreK-12 science instruction*

### To Do

- Additional RET programs for PreK-12 educators
- Integration of ag/natural resource systems as models for PreK-12 science education
- Develop interactive, hands-on demonstrations, exhibits, web sites and a **Global Agriculture, Food and Environment Education Center** for K-16 students and teachers, undergraduate students, and life-long learners

# Highlights – Multidisciplinary Culture and Strategic Partnering

## Done

- Establish **team-based, competitive Hatch projects** for mission-based research

## To Do

- Develop a **Multidisciplinary Monday** program
- Create a monthly faculty, staff, stakeholder, student, **public networking** opportunity – lecture followed by networking
- Designate/hire an **IANR “Business Development”** person

# Highlights – Multidisciplinary Culture and Strategic Partnering

## In Progress

- Highlight/develop partnerships with farmers and ranchers
- Institutionalize competitive team, industry, and pilot-grant programs
- Award Hatch-multistate funds on a **competitive** basis



## Highlights – Strategic Partnering (to elevate)

### To Do

- Develop consistent, transparent business and university-friendly IP policies
- Conduct a review of structures and administrative policies that may be impacting entrepreneurship innovation and science investments (e.g., F&A, IP, royalties, COI)

### In Progress

- Proactively identify associate/full professors who can lead multi/interdisciplinary teams

# Highlights – Creating and Fostering a Dynamic Community

## In Progress

- Hold regular listening sessions sponsored by the IANR liaison committee
- Create an informal gathering place for faculty /staff
- Bring greater visibility to visiting guest lectures across IANR – centralized seminar board as part of ThisWeek@IANR

## To Do

- Develop IANR new faculty/staff orientation and social activities

UNIVERSITY OF NEBRASKA-LINCOLN  
**N ThisWeek@IANR**

Monday, January 23, 2012

**UNL leads \$25 million project targeting E. coli food threat**



The University of Nebraska-Lincoln will lead a \$25 million project to reduce throughout the beef production chain the occurrence of E. coli strains that pose a major threat to public health. [Continue reading...](#)

**Heuermann lecturer Brand: 'Wild and woolly' times are ahead for genetic engineering**



The world is entering a "wild and woolly" time of genetic engineering of food when some of the most significant advancements may come from "amateur" practitioners and in the developing world. Brand, a founder of the "Whole Earth C

**UNL professor, alum honored by Cattle Business Weekly as Top 10 industry leaders**



A University of Nebraska-Lincoln faculty member and a UNL alumnus are named Top 10 industry leaders by The Cattle



**February 8, 2012**

Colleagues—  
 I trust that the semester is going well for you all and you are enjoying winter now that it has finally arrived!

I am writing to remind you of our upcoming IANR ALL HANDS session this Friday, February 10 from 2:00 – 3:30 pm in the Great Plains Room of the Nebraska East Union. We made this a standing event once a semester to allow the collective IANR community the opportunity to have a conversation about the progress we are making on so many fronts in the pathway of IANR to 2020 as well as have a "check in" of how we are doing on all fronts in accomplishing our mission.

This is a particularly important session as we will be outlining the path ahead in meeting the IANR goals for 2012 presented by Chancellor Perleman including our plans for resource allocations moving forward.

There are exceptional times of growth ahead for us with much to celebrate, but each growth requires us all to be "on hand" and involved in the day-to-day work ahead.

I hope that you will be able to join us in person or by web access. The session will also be recorded for later viewing at the same web address.

Looking forward to our conversations in 2012!

- Home
- Research
- Education
- Extension
- Outreach
- Support
- Media
- Events
- Partners
- Staff
- Board
- Admission
- Alumni
- Donations
- Jobs
- Press
- Privacy
- Security
- Accessibility
- Feedback
- Help
- Contact



Colleagues—

I trust that the semester is going well for you all and you are enjoying winter now that it has finally arrived!

I am writing to remind you of our upcoming IANR ALL HANDS session this Friday, February 10 from 2:00 – 3:30 pm in the Great Plains Room of the Nebraska East Union. We made this a standing event once a semester to allow the collective IANR community the opportunity to have a conversation about the progress we are making on so many fronts in the pathway of IANR to 2020 as well as have a "check in" of how we are doing on all fronts in accomplishing our mission.

This is a particularly important session as we will be outlining the path ahead in meeting the IANR goals for 2012 presented by Chancellor Perleman including our plans for resource allocations moving forward.

There are exceptional times of growth ahead for us with much to celebrate, but each





# University Expectations

## By 2017

- **30,000** students (up from 25,000)
- Additional **166** TTF (total of 1,300)
- Graduation Rate (6-yr) to **70%** (from 63%)
- Research Expenditures **\$300 million**  
(from 191 million)
- Innovation Campus Phase 1 complete

# IANR Expectations (by 2017)

Total Enrollment (12.4% of UNL)	<b>4,200 (up 37%)</b> (base 3,056)
Undergraduate	<b>3,200 (up 33%)</b> (base 2,402)
Graduate/PPVM, DPH	<b>1,000 (up 53%)</b> (base 654)

# IANR Expectations (by 2017)

*Graduation Rate – Current 6-yr is **77.6%***

**6-year 85%**

**5-year 70%**

**4-year 50%**

# IANR Expectations (by 2017)

## *Research Expenditures*

- IANR's Research Expenditures represent ~32% of UNL's Total
  - UNL Total- \$191.3 million (FY2010)
  - IANR Total- \$61.3 million (49% from federal sources)



# IANR Expectations (by 2017)

## *Research Expenditures*

- Goal for 2017:  
At least \$96.1 million of UNL's \$300 million
  - **IANR needs a 7.8% (compounded) annual growth rate**
    - Since 1989/90 -- 4.7% annual compounded growth rate
    - Since 2000/01 -- 3.6% annual compounded growth rate
    - Since 2005/06 it has been closer to 2.3%

# Prioritizing Positions

- Ongoing planning in units
- Inventory of core competencies being done in parallel with planning
- Iterative process, with ongoing conversations between and among unit heads and deans
- Preparation for administrative retreat – July 24-25
- Position and resource allocation will be informed by decisions made at retreat

# Units are discussing how they will contribute to:

- Increasing IANR student enrollment to 4,200 with specific emphasis on increasing graduate enrollment?
- Increasing IANR research expenditures to \$96.1 million by 2017, a growth rate of ~ 8% annually?
- Developing partnerships to assist in completion of Phase 1 of Innovation Campus?
- Translating knowledge generated by the unit to those who can best utilize the knowledge?

# Unit Planning

- Discussion at DUH meeting – January 25
- Finalized process & planning initiated – Feb 21
- Draft of unit responses – March 19
- Unit head and dean discussions completed – May 1
- Unit plan revisions completed – June 1
- Ongoing discussions of cross unit collaboration and team formation – June 1 to July retreat
- **Retreat in Nebraska City – July 24-25**



**UNL Total Enrollment  
Fall Semester**

Fall	UNL Total	Under-grad	Prof	Grad
2003	22559	17851	489	4219
2004	21792	17167	193	4162
2005	21675	17037	488	4150
2006	22106	17371	478	4257
2007	22973	18053	502	4418
2008	23573	18526	547	4500
2009	24100	18955	554	4591
2010	24610	19383	607	4620
2011	24593	19345	569	4679

**CASNR Total Enrollment  
Fall Semester**

Fall	CASNR Total	Under-grad	Prof	Grad
2003	1910	1503	0	407
2004	1880	1466	0	414
2005	1990	1553	0	437
2006	2061	1606	0	455
2007	2331	1794	25	512
2008	2569	2015	50	504
2009	2775	2166	50	559
2010	2990	2321	55	614
2011	3056	2402	59	595

Degree Program	2011	2017
Agribusiness	184	241
Agricultural Economics	88	115
Agricultural Education	67	87
Agricultural Journalism	23	30
Agronomy	140	183
Animal Science	263	450
Applied Science	38	65
Biochemistry	98	115
Environmental Restoration Science	10	13
Environmental Studies	76	99
Fisheries and Wildlife	203	265
Food Science and Technology	65	85
Food Technology for Companion Animals	6	10
Forensic Science	117	153
Grassland Ecology and Management	6	8
Grazing Livestock Systems	21	27

Degree Program	2011	2017
Horticulture	90	117
Hospitality, Restaurant & Tourism Mgmt.	13	115
Insect Science	18	23
Mechanized Systems Management	70	91
Microbiology	0	50
Natural Resources & Environmental Econ.	14	18
Plant Biology	11	14
PGA Golf Management	119	200
Turfgrass & Landscape Management	48	62
Veterinary Science	67	87
Veterinary Technology	2	3
Water Science	9	12
Pre-forestry	1	2
Pre-Veterinary Medicine	50	65
Integrated Science	17	22
<b>Total</b>	<b>1934</b>	<b>2827</b>

# And We Need Help on Everything Global

**B**razil

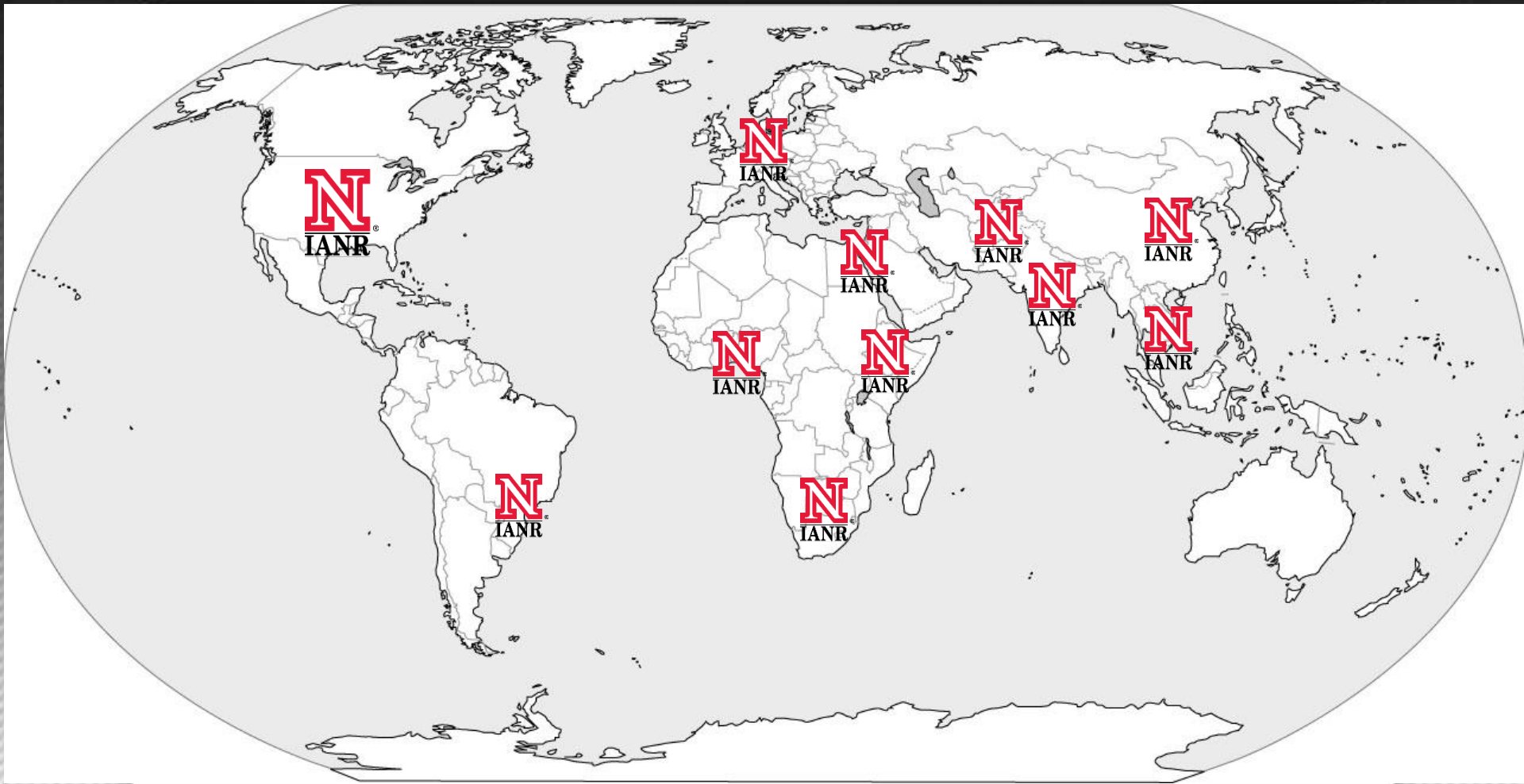
**R**ussia

**I**ndia

**C**hina

**& Africa**





**AFGHANISTAN** (DOD ADT), **BRAZIL** (USP-ESALQ, CAPES), **GHANA** (FARA), **ETHIOPIA**,  
USAID (**MENA**), **ZAMBIA** (IDE), UNESCO-IHE, **CHINA** (SAG, China Ag, Northwest A&F),  
**INDIA** (JAIN, Obama-Singh, MSSRF), **VIETNAM** (MARD)





# University of Sao Paulo - ESALQ



# **IANR** is at work for Nebraska

- 15 Academic Units + NCTA
- Number of specialized centers & program units
- 4 district research and extension centers
- 83 local extension offices
- Over 43,000 acres of land connected to IANR
- Operating Budget of \$182 million





## Building Community . . .



# Community Chat

**March 8<sup>th</sup>**

**2 – 3:30 PM**

**Nebraska East Union**

**Led by the IANR Liaison Committee**



# Roads Scholar Tour

**May 21 – May 23, 2012**

**Experience West Central R&E Center,  
Water Resource Field Lab, Panhandle R&E  
Center, Gudmundsen  
Sandhills Laboratory,  
Western Sugar,  
and much more!**



# Focusing on World Food Needs



Oct. 10 – Dr. M.S. Swaminathan  
Nov. 10 – Dr. Stephen Baenziger  
Dec. 12 – Former Senator Bob Kerrey  
Jan. 17 – Mr. Stewart Brand  
Feb. 20 – Dr. Roberto Lenton  
May 9 – Dr. Jay Keasling

Sept. 28 – Panel of Former Sec of Ag  
(Yeutter, Glickman, Veneman, Johanns)

*Made possible by a gift from B. Keith and Norma Heuermann*  
<http://heuermannlectures.unl.edu>

# Land Grant Celebration

**Celebrating the 150th Anniversary**

**Morrill Land-Grant Act**

September 23 - September 29





1  **Fueling a Healthy World**  
FOOD • FUEL • WATER • COMMUNITIES

2  **BRINGING IDEAS TO LIFE**  
FOOD • FUEL • WATER • COMMUNITY

3  **GROWING A HEALTHY FUTURE**  
FOOD • FUEL • WATER • COMMUNITY

4  **GROWING IDEAS**  
FOOD • FUEL • WATER • COMMUNITY

5  **GROWING IDEAS**  
FOR A HEALTHY FUTURE  
FOOD • FUEL • WATER • COMMUNITY

6  **GROWING IDEAS**  
FEEDING A HEALTHY FUTURE  
FOOD • FUEL • WATER • COMMUNITY



**GROWING A HEALTHY FUTURE**

---

FOOD • FUEL • WATER • COMMUNITY